



Project

Core system upgrading
from SD to 3G HD

Application

Upgrading existing PatchAmp
frames



Technology at work

PatchAmp 3G HD/SDI standard
density Distribution Systems

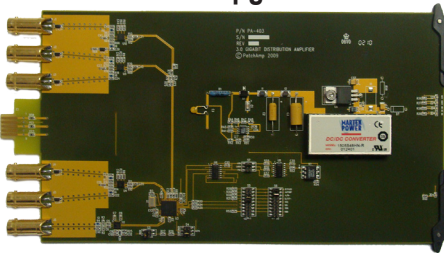
Miranda Kaleido KX Imager

Nvision Routing Switcher

Ross Vision3 Production Switcher

[WJZ-TV](#) recently upgraded their patching and distribution system from SD to 3G HD-SDI by simply exchanging the SD PatchAmp video DA cards for the New 3G version, the [PA-403](#). The existing frames were, from the very beginning, designed for optimum RF performance as well as longevity, and meet all SMPTE requirements for 3G HD-SDI. These coaxial universal frames with incorporated patching were first installed in 2002. Back then WJZ chose [PatchAmp](#) over the old style systems because of its high performance, robust design and the system's space and labor saving virtues. Now, 9 years later, the station plans to expand into two additional standard density systems as they increase the size and requirements of their 3G core.

PA-403 3G upgrade card



WJZ-TV, channel 13, is an owned and operated television station of the CBS Television Network, located in Baltimore, Maryland. WJZ-TV's studios and offices are located on Television Hill in the Woodberry section of Baltimore, adjacent to its transmission tower.



[PatchAmp](#)
20 East Kennedy Street
Hackensack, N.J.07601
phone (201) 457-1504 fax (201) 457-1507