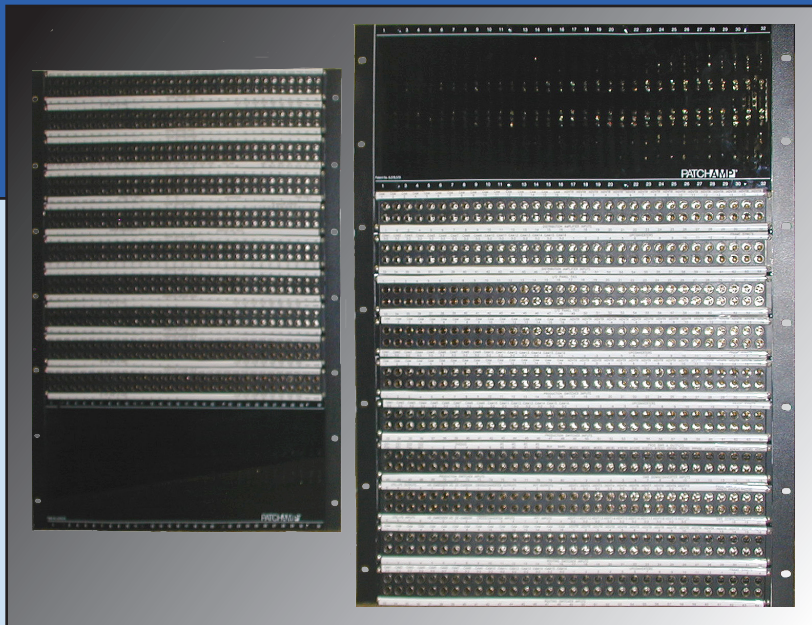


PA10032 VIDEO PATCHAMP FRAME

*Up to 64 1-in by 4-out distribution amps per frame
Also can be configured as 1-in by 9-out
All connections between DAs and jacks are internal
Frame houses HD/SD sdi, AES audio and Analog Video
See thru front cover allows quick status indication
Light weight only 100 lbs per system
Low power consumption and integrated cooling
Alarm relay and meter voltage outputs
75 ohm wired midplane for optimum performance*



The Rack Saver

SPECIFICATIONS

Mechanical

PA10032

Height	24.5 inches (14RU)
Width	19 inches
Depth	16 inches
Nominal Weight	100 lbs. FULLY LOADED

Electrical

connectors	bnc or 16 channel mult
Number of inputs	up to 64
Number of outputs	up to 256

Power

Type	External, 48Vdc
Input Voltage	90-264 Vac, 47-63 Hz, Single Phase
Redundancy	N+1, hot swappable modules
Power Factor	>.99
EMI	complies with EN55022 & FCC Class A

The PA10032 is a 14RU frame specifically designed to eliminate the hassles of installing and wiring large scale coaxial distribution systems. By the virtue of it's patented design; this pre-wired system significantly reduces the rack space required when compared to the older style systems. It also eliminates all wiring between the patchbays and distribution amplifiers.



PatchAmp
20 East Kennedy Street
Hackensack, New Jersey 07601
phone (201) 457-1504 fax (201) 457-1507
www.patchamp.com