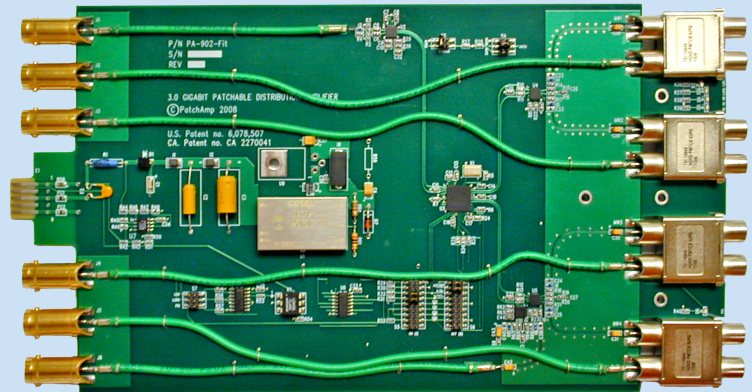


# Patchable Distribution Amplifier

Model: PA-902Lite

- 1 x 5 Expansion Module
- True 75 ohm coaxial in and out
- Auto equalizing
- Multi-rate reclocking up to 3GB
- Supports all HD/SD formats
- Removes high frequency jitter
- Compatible with PA3200Lite
- Lock and EQ warning indicators
- Signal meter and fault outputs



## Technical Specifications:

### Input

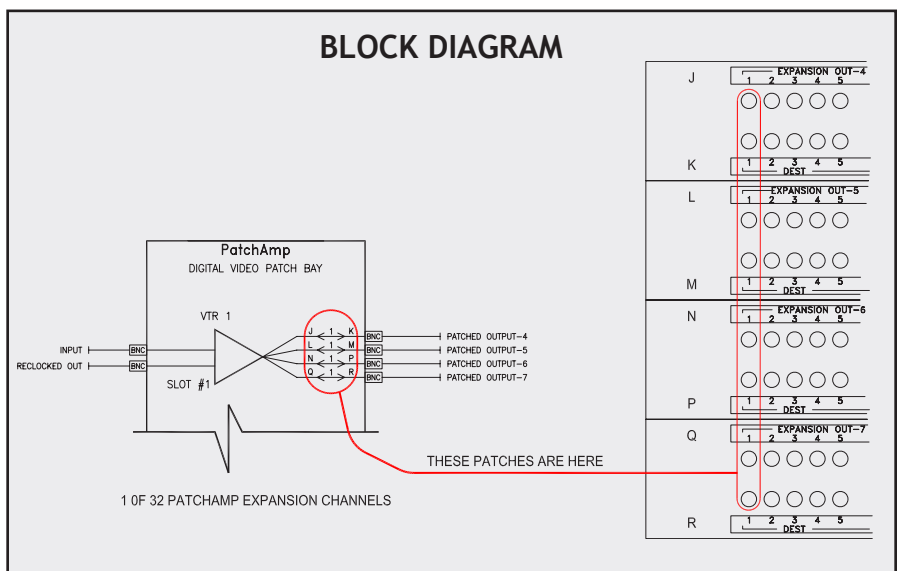
Number of Inputs	1
Input Connection	75 Ohm BNC
Input Impedance	75 Ohm
Input Return Loss	>18dB up to 1.5GHz
Signal Level	800mV +/-10%

### Output

Channels	Single
Outputs per Channel	4 Patched 1 Direct
Output Connection	75 Ohm BNC
Output Impedance	75 Ohm
Output Return Loss	>18dB up to 1.5GHz

### Performance

Standards	SMPTE 424M, 292M, 259M, 344M
Data Rates	143, 177, 270, 360, 540, 1483.5, 1485, 2970 Mb/s
Max Cable Length	230 ft. @ 2.97 Gb/s Belden 1684A 460 ft. @ 1.485 Gb/s Belden 1684A 1,150 ft. @ 270Mb/s Belden 1694A
Equalization Mode	Automatic Multi-Rate
Reclocking	Multi-Rate
Signal Level	800mV Nominal
DC Offset	0V +/-0.5V
Rise & Fall Time	200ps nominal
Overshoot	< 10% of amplitude
Wideband Jitter	< 0.2 UI



**PATCHAMP**  
PATCHING & DISTRIBUTION TECHNOLOGY

20 East Kennedy Street, Hackensack, NJ 07601  
201-457-1504 Fax: 201-457-1507  
[www.patchamp.com](http://www.patchamp.com)